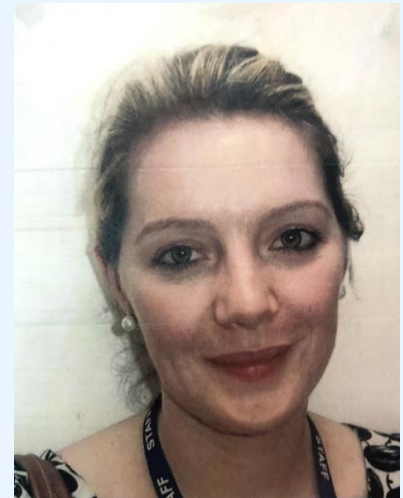


Welcome to Year 6



The Year 6 Team



The Year 6 Team

Teaching Staff

St Aidan: Miss Nash

St. Scholastica: Mrs Fuller and Mrs Vosper

Spanish

Ms Lovett

Support Staff

Mrs Nelson

Mrs Leon

Mrs Szczepaniak

Mrs Newman

Music

Mrs Reuss

Games

Mr Walton

Standards and Expectations

Children must take extra care to listen carefully to instructions from all adults within the school and to remain with their pod during lunchtimes.

At lunchtimes children must remain in their zone but children may mix during morning playtime.

Children must wash their hands and sanitize as directed.

If your child has a cold and is attending school, please provide them with a packet of tissues and remind them to take extra care when looking after their personal hygiene.

Equipment

PE & Games: - fully named kit, note for missed lessons

Children must come to school wearing their PE kit on Wednesdays and Fridays.

Water bottles: to be brought in and cleaned at home each day

Coats: please check the weather forecast daily as pick up arrangements now require pupils to wait outside

Timetable

	Monday RF	Tuesday RF	Wednesday RF	Thursday HV	Friday HV
8.30-8.50	Wash hands and early morning work				
8.50 - 9.50	English	English	Games - Mr Walton	English	English
10.00	Maths	Maths	Spanish - Mrs Lovett	Music - Mrs Reuss	Maths
Wash hands					
11.00	B	R	E	A	K
Wash hands					
11.20 - 12.00	Computing	Science	English	Maths	RE
12.00 - 12.40	Spelling Assembly		Maths	Reading lesson	PSHE (1/2 hour)
Wash hands					
12.45	L	U	N	C	H
Wash hands					
1.45 - 3.10	RE Class reader	Humanities Class reader	Reading lesson/SPAG Class reader	Art Class reader	Assembly PE
Wash hands					

Monday	Tuesday	Wednesday	Thursday	Friday
Maths	Maths	Spanish ML	Music JR	Maths
English	English	Games JW	Maths	English I
B	R	E	A	K
Spellings Assembly	Science	Maths	English	RE
12:00-12:45 Computing		English	Reading Lesson	PSHE 12:15-12:45
L	U	N	C	H
RE Class Reader	Humanities Class Reader	Reading Lesson/SPAG Class Reader	Art	PE Assembly

*Children must remember to bring in a snack for break time.

Home Learning

GPS: Monday

Maths: Tuesday and Thursday

English: Friday

Daily:

- Reading (30 minutes per day)
- Spelling practise
- Practise of times tables and division facts

Children may also be set additional tasks such as completing research.

Reading for Pleasure

- *Reading enjoyment has been reported as more important for children's educational success than their family's socio-economic status (OECD, 2002).*
- *Evidence suggests that reading for pleasure is an activity that has emotional and social consequences (Clark and Rumbold, 2006).*

Kate Greenaway Medal and Carnegie Medal -

<http://www.carnegiegreenaway.org.uk/home/index.php>

Book Trust – <http://www.booktrust.org.uk/books-andreading/children/booklists/>

End of Key Stage Assessment

Currently planned for W/C May 9th 2022

These are the national tests your child will sit in 2022. The results are used to track children's progress from Key Stage One and to act as a benchmark for secondary schools tracking progress to GCSE.

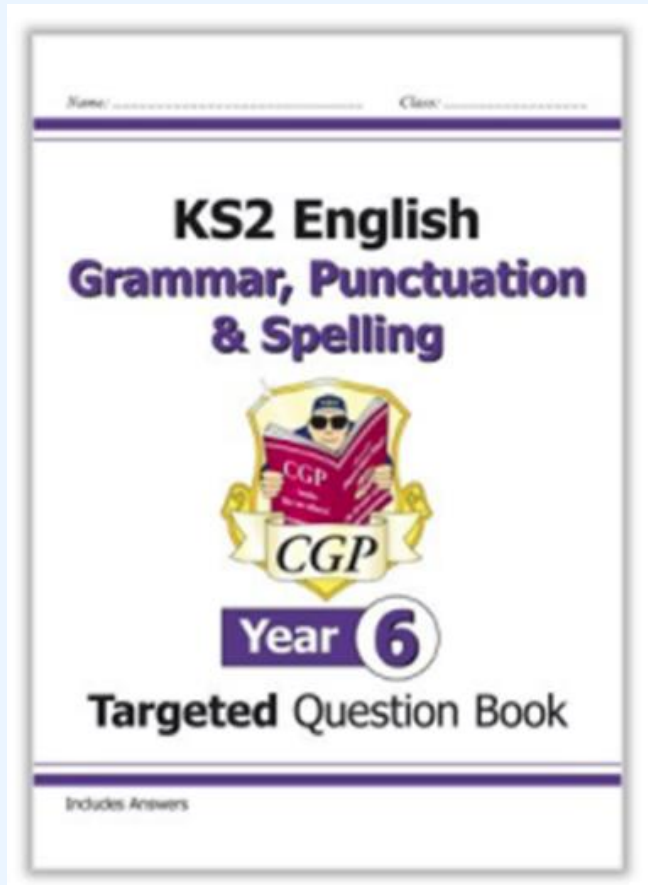
You will be given your child's raw score, alongside a scaled score and told whether they have reached the national average. The scoring will be based around 100 but the margins above and below this, which will constitute the national average, will be announced later.

Preparation and Practice

Please note: pupils may sit practise papers at school.

To ensure that our assessments are as accurate as possible, we politely request that you do not practice at home using 2018 or 2019 past SAT's papers.

ENGLISH CURRICULUM



A very important part of the curriculum for English is the emphasis placed on grammar, punctuation and spelling (GPS).

In order to help your child practise the skills taught, we are asking parents to contribute towards a workbook which presents the content in a lively and engaging manner. It costs £5.95 in shops but if bought through school will only cost **£4.00**. You can do this on Parent Pay and we ask that you do so by **Friday 24th September**.

This book is to be used to support lessons in school and not designed to be worked through independently.

What is the PUPIL PREMIUM?

- The Pupil Premium was introduced in April 2011.
- It is additional funding allocated to schools to support pupils who have been registered for free school meals, for children who have been “ looked after” continuously for more than six months and for children of service personnel.
- This funding is given to schools to help raise achievement of children who require additional support with their learning and or emotional development and who fulfil any of the above criteria.
- SJF use the funding in many ways which includes additional 1:1 support, booster sessions, funding trips, additional lunchtime clubs and emotional literacy support. These initiatives regularly benefit all pupils not just those in receipt of pupil premium funding.

The link to the Pupil Premium form will be in this week’s headlines, and is also below:

[self.merton.gov.uk/service/Pupil Premium and Free School Meals application](http://self.merton.gov.uk/service/Pupil_Premium_and_Free_School_Meals_application)



Parents' Forum



The Parents' Forum is made up of at least 2 'class reps' from each class. The purpose of Parents' Forum is to provide a useful and productive link between school and parents; updating about events and consulting on future plans.

Class rep positions are self-nominated and open to anyone who is able to spare the time to attend meetings and is willing to make themselves known to parents from the rest of their child/children's class.

The role of a 'rep' is to help to foster friendly, welcoming and helpful relationships between the parents and carers of children in that particular class/year group; to liaise with school regarding support and help at fundraising events – and in doing so support the work of the PTFA.

As a school community we rely on the help and support of all our parents and carers. Becoming a parent rep one way of ensuring that our school community work together to achieve the very best for all.

Contacting Us

Please do not hesitate to contact us if you have any queries or concerns.

The Year 6 email address is available to parents and we will aim to respond to urgent enquiries within 48 hours and all other queries within one week.

year6@st-johnfisher.merton.sch.uk

As we are unable to check emails during the school day, for issues that require our immediate attention please contact the school office by telephone. You may also contact them via email: **enquiries@st-johnfisher.merton.sch.uk**

Query/information:	Communication channel to use:
<i>Reporting a child's absence from school</i>	<p>Telephone main office: 020 85402637 (leave message before 8.30am and after 4pm)</p> <p>MySchoolApp - reporting absence function https://myschoolapp.co.uk/parents-page/ Email: school@st-johnfisher.merton.sch.uk</p>
<i>Passing on information regarding day to day matters (eg: someone different picking up your child)</i>	<p>Telephone main office: 020 85402637 (leave message before 8.30am and after 4pm)</p> <p>Email: school@st-johnfisher.merton.sch.uk</p>
<i>Queries about ParentPay, school lunches, extra curricular clubs</i>	<p>Email: school@st-johnfisher.merton.sch.uk</p> <p>Telephone main office: 020 85402637 (leave message before 8.30am and after 4pm)</p>
<i>Queries about learning/information regarding a child linked to learning/class/request a call with class teacher</i>	<p>Year group email address (circulated in September)</p> <p>Telephone main office: 020 85402637 (leave message before 8.30am and after 4pm)</p>
<i>Queries regarding extended services (Early Birds Breakfast club and Fisher Fun Club after school club)</i>	<p>Email: wraparound@st-johnfisher.merton.sch.uk</p> <p>FOR URGENT MESSAGES call FFC mobile: 07366463929 OR main office 020 8540 2637</p>
<i>Queries regarding admissions</i>	<p>Telephone main office: 020 85402637 (leave message before 8.30am and after 4pm)</p> <p>Email admissions officer: admin.officer@st-johnfisher.merton.sch.uk</p>

Other Matters

- Parents' Evening will take place at the end of the first half term via Google Meet.
- Oct 22nd is an INSET day
- Curriculum notes are on the school website